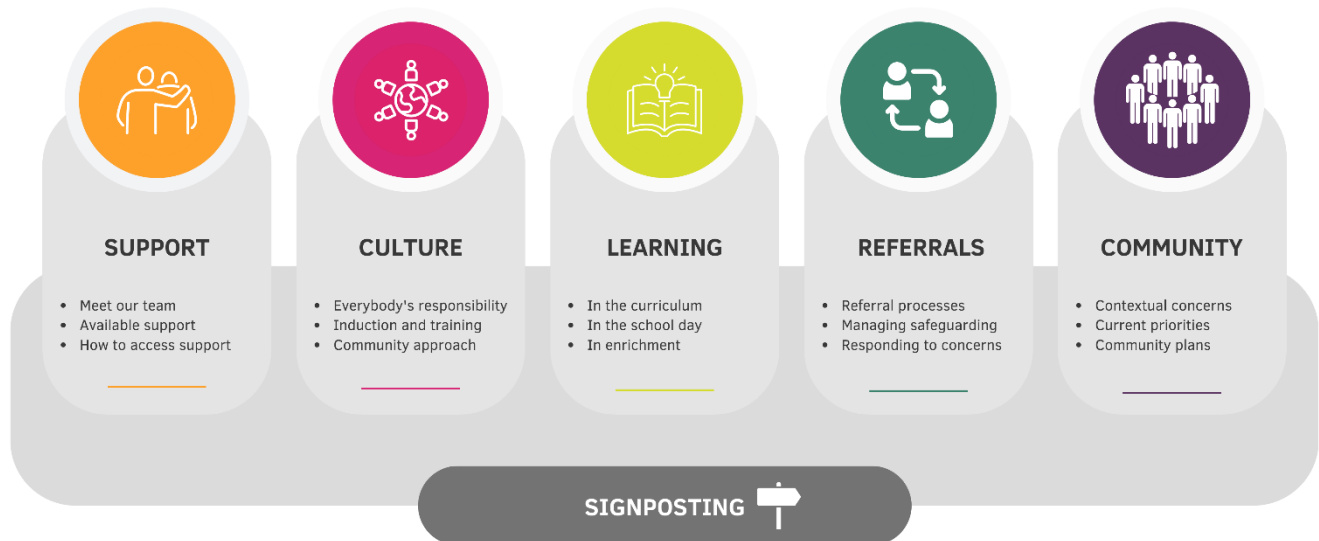


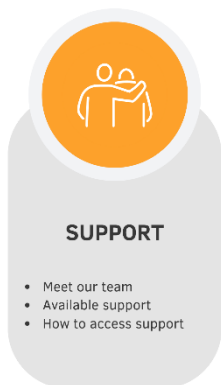
SAFEGUARDING at



Safeguarding is the action that is taken to promote the welfare of children and protect them from harm. Safeguarding means:



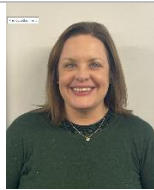


- protecting children from abuse and maltreatment
- preventing harm to children's health or development
- ensuring children grow up with the provision of safe and effective care
- taking action to enable all children and young people to have the best outcomes.

At Grange we take safeguarding very seriously; the safety of our pupils is the most important priority. This document sits alongside our MMAT Safeguarding Policy and outlines our school specific Safeguarding processes and how we support our children and their families.



Grange Support

Meet the team

		
Designated Safeguarding Lead Online Safety Lead Charlie Summers Headteacher	Deputy-Designated Lead Steph Davies Assistant Headteacher	Deputy-Designated Lead Jessica Rogers SENDCO
		
Deputy-Designated Lead Cath Stokes Teacher	Deputy-Designated Lead Safeguarding Governor Julie Johnson	

Our attendance office is Laura Mathias

Available support

- Staff trained in attachment, trauma, nurture, SENDCo.
- A range of external agencies as support
- We regularly share safeguarding information on our social media platforms to keep parents aware of where they can access support and training available.
- The school will actively source advice and support where needed.


How to access support?

Parents:

- If you have a concern, please come into school and speak to a member of the DSL team or telephone the school to arrange a meeting on 01743 462984.
- If a child is at immediate risk, please call the police on 999.
- If you have a concern about a child, please contact FPOC on 0345 6789 044.

Pupils:

- Pupils can speak to any member of staff about a concern. Some children might have a key worker who is assigned to check in regularly with them.
- Pupils know who the safeguarding team are and reminded regularly that if they have a concern or worry, they can speak to anyone.
- Worry boxes: Every class has a worry box which teachers check daily. Children can write concerns and worries and post them. Teachers can then support the child with their concern/worry.
- Colour monster: we use the colour monster to identify and describe how we are feeling.



Worried about a child or young person?

Report Child Abuse

If you are worried that a child or young person is at risk or is being abused, contact the children's social care team at their local council.

Call **999** if the **child is at immediate risk** or call the police on 101 if you think a crime has been committed.

What to report

- Child abuse includes **Physical abuse, Sexual abuse, Emotional abuse and Neglect.**
- Concerns of a child being exploited, including **sexual exploitation and criminal exploitation.**
- You do not need to be certain they have been abused – it is OK to report a suspicion.
- You can choose to remain anonymous.

What happens when you make a referral?

The person who takes the referral will decide what to do. For example, they might:

- gather more information
- ask a social worker to look into it
- contact the police
- Give you advice on what to do next

They will not be able to tell you what happens next, because of confidentiality.

How to make a referral:

Shropshire referrals should be made by First Point of Contact (FPOC).

Telephone number for referral: 0345 6489 044

Phone lines are open between Monday to Thursday, 8.45am to 5pm, and on Friday from 8.45am to 4:00pm.

If a child is in immediate danger, you should always call the Police on 999

Staff:

- Staff should follow the MAT safeguarding policy.
 - *If you see or hear something of concern, you must report it.*
- Staff should record the concern on CPOMS and if a child is off imminent risk should inform a DSL straight away.
- All staff working with pupils at Grange Primary are a DBS and are logged on the Single Central Record.
- DSL will then respond to the concerns.
- Supervision- staff have opportunities to discuss incidents with DSLs.

Safeguarding Children Policy

Grange Safeguarding Culture



We believe safeguarding is everybody's responsibility; staff, parents, pupils, community and visitors. The Grange has a culture of belief that *it could happen here*. No concern is too small not to be voiced: it might be the missing piece that completes the jigsaw puzzle of concern.

Safeguarding is heart of everything we do. Our Granger values of care and respect actively teach the need to safeguard ourselves and those around us. Grange is a family of Grangers. Our staff are approachable and friendly providing a safe space for our children, families and the wider community.



Safeguarding is a key aspect of the MATs Learning for Life Framework and WAVE guidance. This has several different levels. The Safeguarding assurance audits our safeguarding systems and structures ensuring we are offering the best care and keeping everyone safe. The Vulnerable Students review take place half termly and these offer support, guidance and challenge in child centred discussions. The framework and guidance offers pathways for pupils who maybe and recommends steps to be taken to support a pupil to the best possible outcome. We also complete internal audits and checks. We complete Local Authority Safeguarding Audits regularly and adapt our practice and procedures accordingly. The school has regular Inclusion meetings and Pupil Progress meetings which internally use the Learning for Life and Wave guidance to discuss next steps.



Supervision is developing at the Grange Primary school, and everyone has a safe space to talk, if needed. The school buy in to SAS insurance which offers a well-being package which all staff have access to.



Recruitment, Induction and training

- When recruiting new staff, the recruitment process is underpinned by the Safer Recruitment requirements and training.
- All staff have accredited training (Safeguarding, Prevent, Online Safety, GDPR).
- We regularly attend current training to develop expertise of staff.
- Safeguarding is a key aspect of our induction package for new staff, volunteers and visitors.
- All staff completed an annual assessment based on the updates from KCSIE.
- A range of scenarios are provided regularly on the weekly briefing for staff addressing recent issues.
- Updates from the local authority are shared.
- Online signing in ipad has a safeguarding reminder.

Community approach



Safeguarding adapts and evolves constantly in the world around us, and our DSLs are committed to ensuring that they are current with updates and issues arising in the local community, for example, increased vaping and Criminal Sexual Exploitation (CSE).

The school has been accredited with the Safer School since 2016. The school works tirelessly to ensure that pupils and families feel that the school is a safe space. In our most recent Safer Schools Survey (June 2024), 92% of pupils said that they felt safe at school. 98% of families felt that school was a safe site.

DSLs regularly attend locality meetings where professional meet to discuss localised safeguarding concerns and share relevant information.

Grangers learning about Safeguarding

How does our Granger curriculum support safeguarding?

Our PSHE and RSE curriculum, teaches children about how to keep themselves safe at an age-appropriate level.

Our Computing curriculum regularly teaches online safety. The first lesson of every half term is dedicated to an aspect of online safety, so it is interwoven throughout the curriculum using an interleaving approach.

Throughout other subjects in the curriculum, we also explicitly make cross-curricular links to Safeguarding, for example, in science learning about which foods are edible and what to do if we do not know what it is.

Our Assembly calendar is carefully designed to interweave our Granger Values, the British Values and Safeguarding topics. These topics include regular reminders regarding who to talk to in school and coloured lanyards. It also includes safety topics such as water, railway and sun safety.

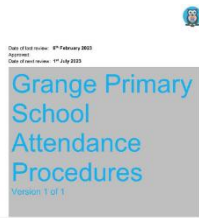
Our daily timetable has been created to support our Granger's mental health and wellbeing. Pupils arrive to calming music in the morning at the start of the school day. After lunch, classes have 'Nesting' time which is designed as a pause to reset and be ready for learning. Children carry out activities such as yoga, calming colouring, meditation or reading as everyone needs a range to promote their mental health.

Staff are available for mental health or worry check ins throughout the day using the colour monster.

How does the school day support safeguarding?

Rhythm of the day is designed to support with safeguarding. From the start of the day, the daily SLT briefing is a designated time to follow up and raise concerns. Presence on the gate by members of the senior leadership team facilitates open dialogue with families. During the walks through school which punctuate the day at 9am and 1:00pm, staff can raise concerns that may have arisen with immediacy, if required. It also allows staff to identify pupils who are dysregulated and put required support in place.





Attendance is key to our safeguarding. We have a detailed absence procedure to ensure that a clear, robust system and structure is in place that identify patterns and anomalies to mitigate potential risk factors.

Posters and visual reminders are located around school to remind pupils and staff about the layers of support and advice available. There is also a clear flow chart of the procedures for staff to follow.

How does our enrichment support safeguarding?

Grange enriches the curriculum in various ways to develop and teach children about how to keep themselves and others safe.

Throughout the year, we have planned trips to external events and visitors who come to school. For example, Year 6's visit to Crucial Crew, Year 3's unit of learning about Road safety and Reception and Year 6 Bikeability opportunity. All these experiences teach and build on pupils' prior knowledge and learning to support their pathway to adulthood.



Grange also explicitly plans individual days and special weeks specifically aimed to promote and raise awareness. Examples include:

- NCPCC
- Purple Leaf
- Online Safety Day
- Anti-bullying week
- Mental Health week
- Police workshops



REFERRALS

- Referral processes
- Managing safeguarding
- Responding to concerns

Grange Referral Process

If we have concerns about a child, we follow the Trust Safeguarding and Child Protection policy.

Safeguarding Children at Grange Primary

Observation by a member of staff that causes a feeling of unease

For example:

- Injury
- Evidence of lack of care
- Child says something
- Change in behaviour
- Child exploitation/county lines/grooming
- Adult says something regarding a child

Is the observation/discussion suggesting the child's safety/well-being is being compromised or at risk of cultural abuse?

NO

Discuss the concern with Class Teacher, record the incident on CPOMS

Are there a growing number of concerns?

Is there a pattern?

Are you concerned?

NO

Continue to monitor

YES

Upload the concern on CPOMS in as much detail as possible. Then report it to a Designated Safeguarding Lead (DSL). This should be done on the same day unless there are exceptional circumstances.

DSLs

- Charlie Summers
- Steph Davies
- Cath Stokes
- Jess Rogers

OR in exceptional circumstances, such as in an emergency or a genuine concern that appropriate action has not been taken, staff members can speak directly to FPOC. Contact the FPOC on 0345 6789021

If out of hours: Emergency Duty Team on 0345 678 9040

Yes

Discuss the Vulnerable Pupil Observation with a DSL

DSLs discuss the details of the reported concerns and may gather further information including talking with families. If the DSLs decide that the concerns meet the threshold, they will report it following the procedures outlined in Keeping Children Safe in Education to the First Point of Contact (FPOC). DSL's can gain support and guidance from the Trust DSL.

As a school, we also make other referrals outside of FPOC to other agencies such as:

- School Nurse
- BeeU
- Mental Health Team
- CLIMB
- Purple Leaf
- Speech and Language

All collaboration with external agencies is working in partnership with families.



Grange Community

What are Grange community concerns?

Due to the deprivation in our locality a large percentage of our pupils are vulnerable. Our concerns are that our children may be exposed to anti-social behaviour, substance misuse and county lines. Studies of adults show that adverse childhood experiences (ACEs) are associated with health and social problems and are more common among people living in deprived areas.

Within school our preventative curriculum is being designed to address national concerns of increased vaping and anti-social online behaviour. This is done in conjunction with families to empower our children and young people to stay safe. Furthermore, these experiences are designed provide equity for our children, so they have the opportunities to learn like children from economically affluent backgrounds.

What are our Grange priorities?

Ensuring our curriculum supports our pupils to be Granger Citizens ready for their next stage.

What is our community plan?

Working with communities for a better tomorrow.