

The Nursery curriculum promotes teaching and learning to give children a broad range of knowledge and skills that provide the right foundation for good future progress with a focus on the prime areas of learning and development:



**Personal, social and emotional development**

**Physical development**

**Communication and language**

Children will be involved in adult led activities such as developing number sense and phonics in every session and will have access to opportunities to complete guided tasks across every area of the curriculum and learn through play during child led sessions. There are always opportunities for indoor and outdoor learning.

Each half term we do a new exciting topic look out for our newsletters for more information.

Support your child's learning and development at home by helping them to:

- complete the mini topic projects
- read the library books your child will bring home

Please see Mrs Heilbronn for more information.



Your child may like to wear full school uniform or a school jumper to Nursery. Our school uniform is available from [www.schoolshopdirect.co.uk](http://www.schoolshopdirect.co.uk)

**SCHOOL SHOP**  
direct



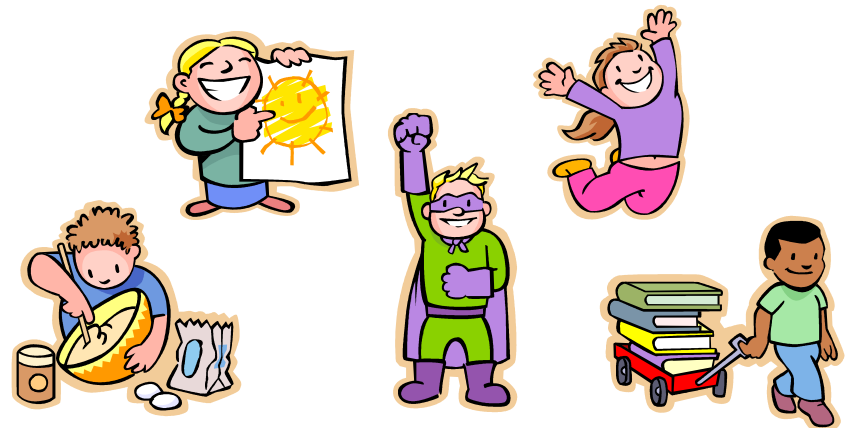
**GO...**  
**F**riendship  
**A**mbition  
**R**espect  
**R**esponsibility



Visit our website at  
[www.grangeprimaryshrewsbury.co.uk](http://www.grangeprimaryshrewsbury.co.uk)



# Welcome to Saplings



## Saplings Staff Members:



Mrs Heilbronn



Mrs Dance

## Session Times:



Morning Session 9.00 - 12.00

Lunch Club 12.00 - 12.30

Afternoon Session 12.00 - 3.00

Doors open to drop off at 8.45 for the morning session and 11.45 for the afternoon session please ensure that your child arrives in plenty of time. Please ensure that children are collected promptly at the end of sessions.

Every child is entitled to 15 hours of free childcare (5 sessions) each week.

We are also currently able to offer additional sessions. If you are interested in additional sessions please see Mrs Heilbronn for a booking form.

Your child may also be entitled to additional free sessions - you can check and apply online by visiting [www.childcarechoices.gov.uk](http://www.childcarechoices.gov.uk)  
If your child is eligible please ensure that you give us your code to enable these additional sessions to start.

Childcare  
Choices

Please phone the school office to let us know if your child is not able to attend a session on 01743 462984. Please be aware that if your child has had sickness or diarrhoea they should not return to nursery for 48 hours after last episode.

## Every session your child will need to bring:



a bag



a water bottle

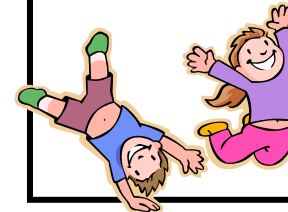


a coat

Please leave a spare set of clothes (including underwear and socks) in your child's locker in case of toileting accidents. Please speak to Mrs Heilbronn if your child still wears nappies or pull-ups.

**Please make sure that all items of clothing, bags and water bottles are named.**

PE session:  
Thursday  
afternoon



Forest session:  
Tuesday afternoon



Please ensure your child brings:

a pair of wellies, a waterproof (an all-in-one is ideal), extra layers (a fleece is ideal) and a hat and gloves in the winter, a sun hat in the summer.

At snack time we have milk and fruit. Please let us know if your child has any specific dietary requirements.



Come in...

We hold weekly drop-in sessions to give you an opportunity to talk about the progress that your child is making and contribute to their learning. Your child will also really enjoy showing you what they have been working on in nursery. Please see notices in the window for details.

